



Living in a Global Society

How we can help each other.

Robert L. Santos, director
U.S. Census Bureau

Our Global Community



Data for Equity

Official statistics can assist in identifying underserved communities and equitably distributing resources.

United States[®]
Census
Bureau

Partners Researchers Educators Survey Respondents News NAICS Codes Jobs [About Us](#) Contact Us Help

Topics Data & Maps Surveys & Programs Resource Library

Search data, events, resources, and more

// Census.gov / Advancing Equity with Data / Library / Visualizations

Data Equity Visualizations

Share [Facebook](#) [X \(Twitter\)](#) [LinkedIn](#)

All 2024 2023 2022 2021

2024

Population: July 1, 2023

U.S. Percent Hispanic or Latino: 19.47%

Population

Hispanic or Latino Population as Percent of County Total Population

This graphic shows the Hispanic or Latino Population as percent of county total population.

Percent Change in the Hispanic or Latino Population by County: July 1, 2022, to July 1, 2023

U.S. Percent Change in the Hispanic or Latino Population: 1.8%

Population

Percent Change in the Hispanic or Latino Population by County

This graphic shows the percent change in the Hispanic or Latino population by county.

Top 15 Largest-Gaining Cities by Numeric Change Between July 1, 2022, and July 1, 2023

City	Change
San Antonio, TX	21,070
Fort Worth, TX	21,305
Charlotte, NC	14,037
Jacksonville, FL	14,004
Port St. Lucie, FL	13,339
Atlanta, GA	13,052
Phoenix, AZ	11,053
Georgetown, TX	9,170
Celina, TX	9,130
Salisbury, NC	8,873
Pueblo, CO	8,671

Population

Top 15 Largest-Gaining Cities

This visualization shows the top 15 largest-gaining cities by numeric change between July 1, 2022 and July 1, 2023.

Top 15 Fastest-Growing Cities by Percent Change Between July 1, 2022, and July 1, 2023

City	Change
Celina, TX	26.6
Pueblo, CO	23.9
Patuxent, TX	22.3
Ames, TX	16.9
Lubbock, TX	15.6
Centerton, AR	12.2
San Antonio, TX	10.8
Georgetown, TX	10.5
Proctor, TX	10.5
Fort Worth, TX	10.4
Kyle, TX	9.0

Population

Top Fastest-Growing Cities

This visualization shows the top 15

Young Children in 2020 County Undercounts and Overcounts

Demographic Analysis: Analyzes Net Coverage Error Estimates for Children Ages 0-4

Population

Young Children in 2020: County Undercounts and Overcounts

Demographic analysis net coverage

Young Children in 2020 State Undercounts

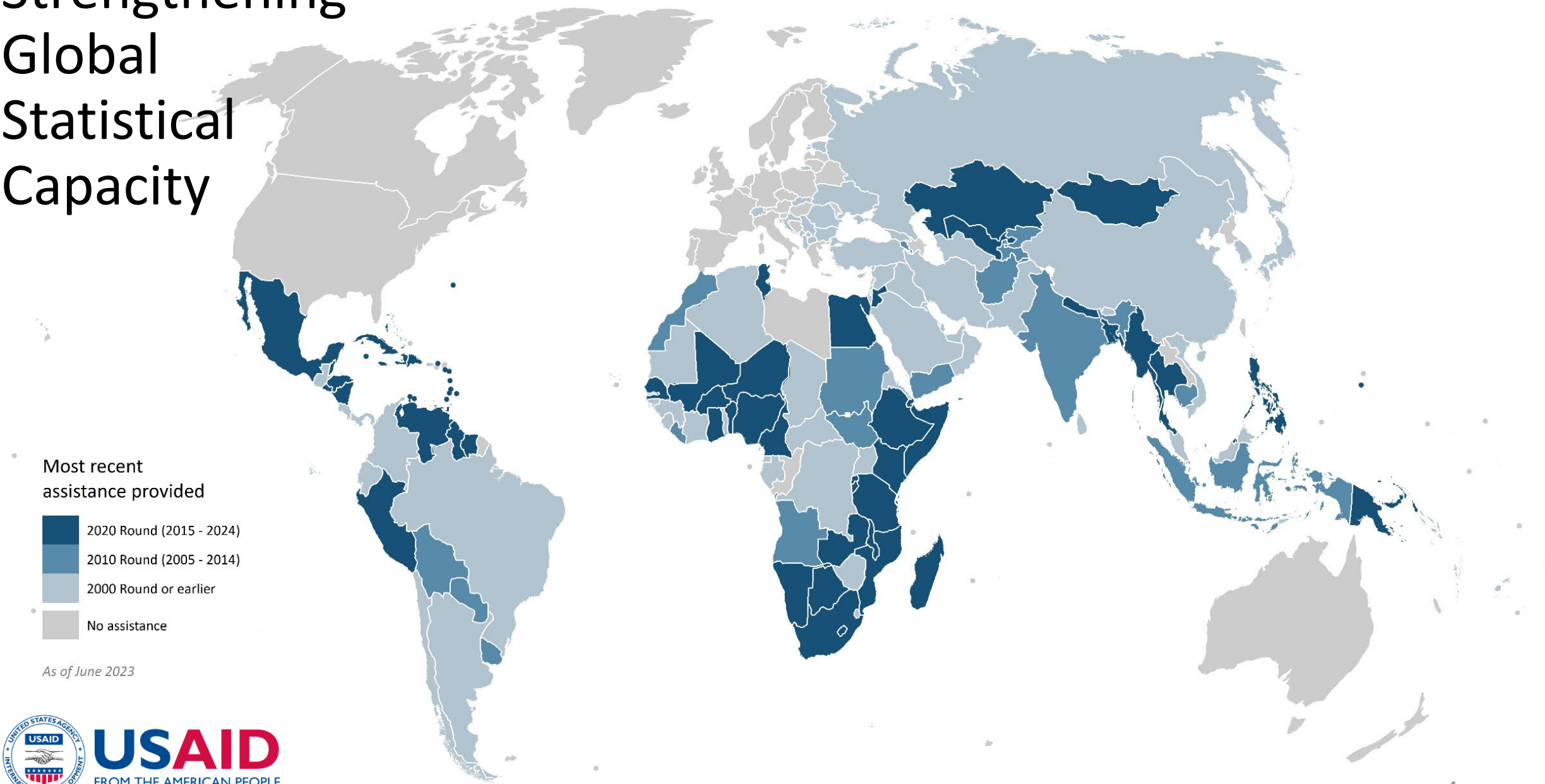
Demographic Analysis: Analyzes Net Coverage Error Estimates for Children Ages 0-4

Population

Young Children in 2020: State Undercounts

Demographic analysis net coverage

Strengthening Global Statistical Capacity



As of June 2023

An Equity Tool to Identify Underserved Communities



Step 1: Select State
Set the Context



Step 2: Select County
Generate a Profile

To set the Community Context (right panel):

'Select a State' in Step 1 or Draw a Region in the Map Using the select tool

The right panel will update to reflect your chosen state

Responsive Legend

Census Datasets (states, counties, census tracts)



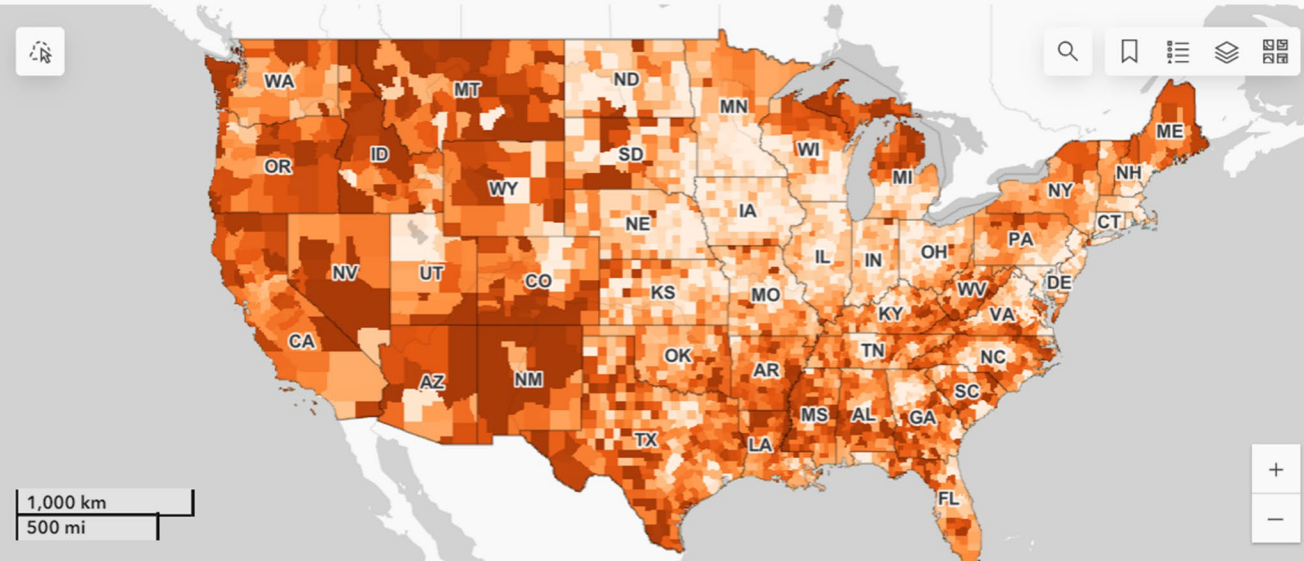
Rate of individuals with three plus components of social vulnerability

< 40

- Coastal Flood Advisory
- Coastal Flood Statement
- Coastal Flood Warning
- Coastal Flood Watch
- Flash Flood Statement
- Flash Flood Warning
- Flash Flood Watch

Interactive Map: Explore Census Bureau and Emergency Response Reference Datasets

Select Thematic & Reference Layers to view by clicking Layers icon in map then turning layers on & off | Expand the map by clicking in the upper right corner



Esri, TomTom, Garmin, FAO, NOAA, USGS, EPA, USFWS | U.S. Census Bureau's Community Resilience Estimates (CRE) 2022 | U.S. Census Bu...

[American Community Survey](#) 2018-2022, [Community Resilience Estimates](#) Equity Supplement 2022, [County Business Patterns](#) 2021, & [Nonemployer Statistics](#) 2021

Community Context

USA Totals shown until state and/or region

Households
 125.7M

Population
 331.1M

Population with 3+ Components of Social Vulnerability

20.63%

[Explore CRE Equity Supplement](#)

Household Characteristics

Below Poverty:
15.6M
or 12.4%

1+ Disability:
32.5M
or 25.9%

Without Vehicle:
10.5M
or 8.3%

With Broadband:
111.1M
or 88.3%

[View DP02, DP04, B22010, B17017 data at](#)

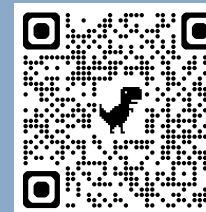
Interactive Map

County: Economic Profile

County: Social Characteristics

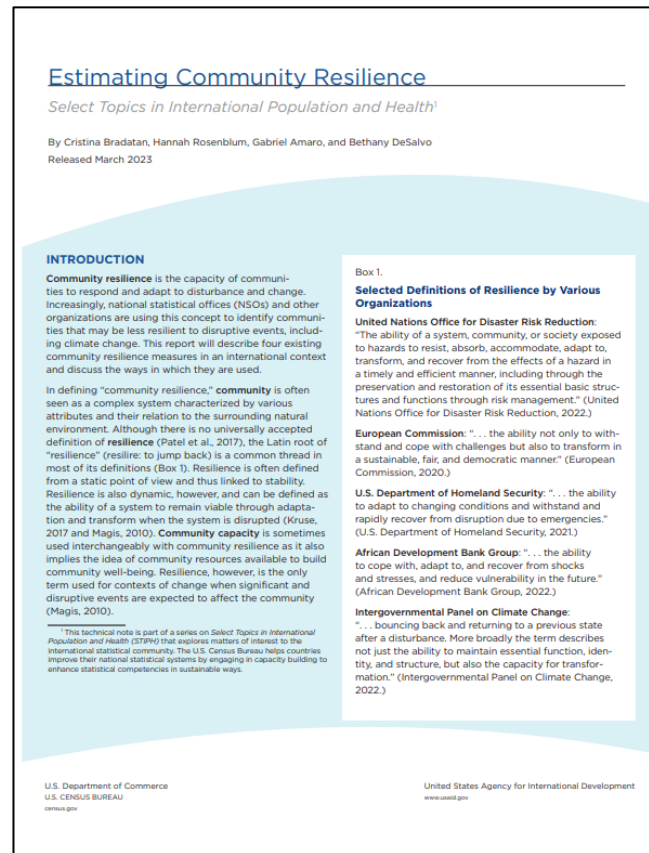
County: Race and Ethnicity

County: Business Profile

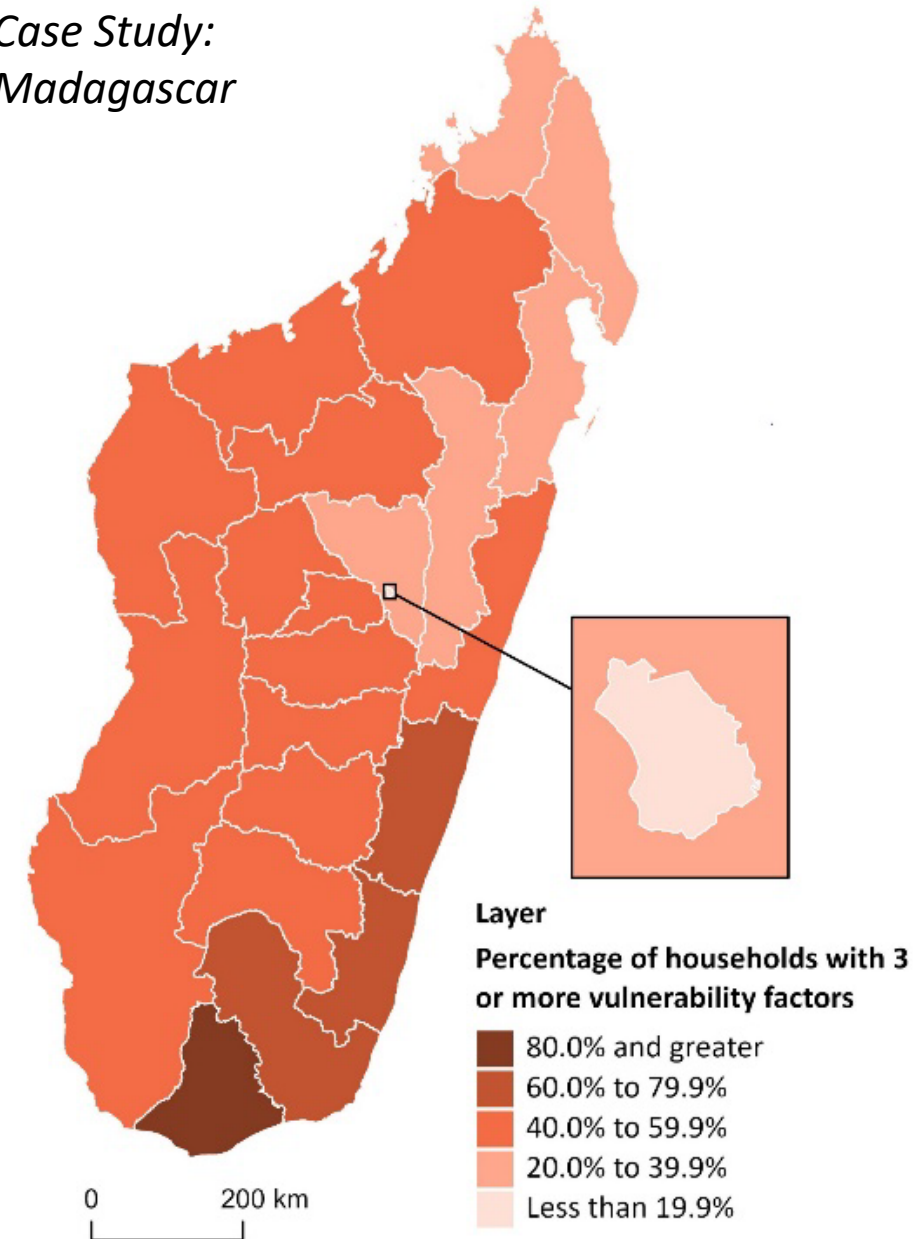


Estimating Population Vulnerability and Resilience

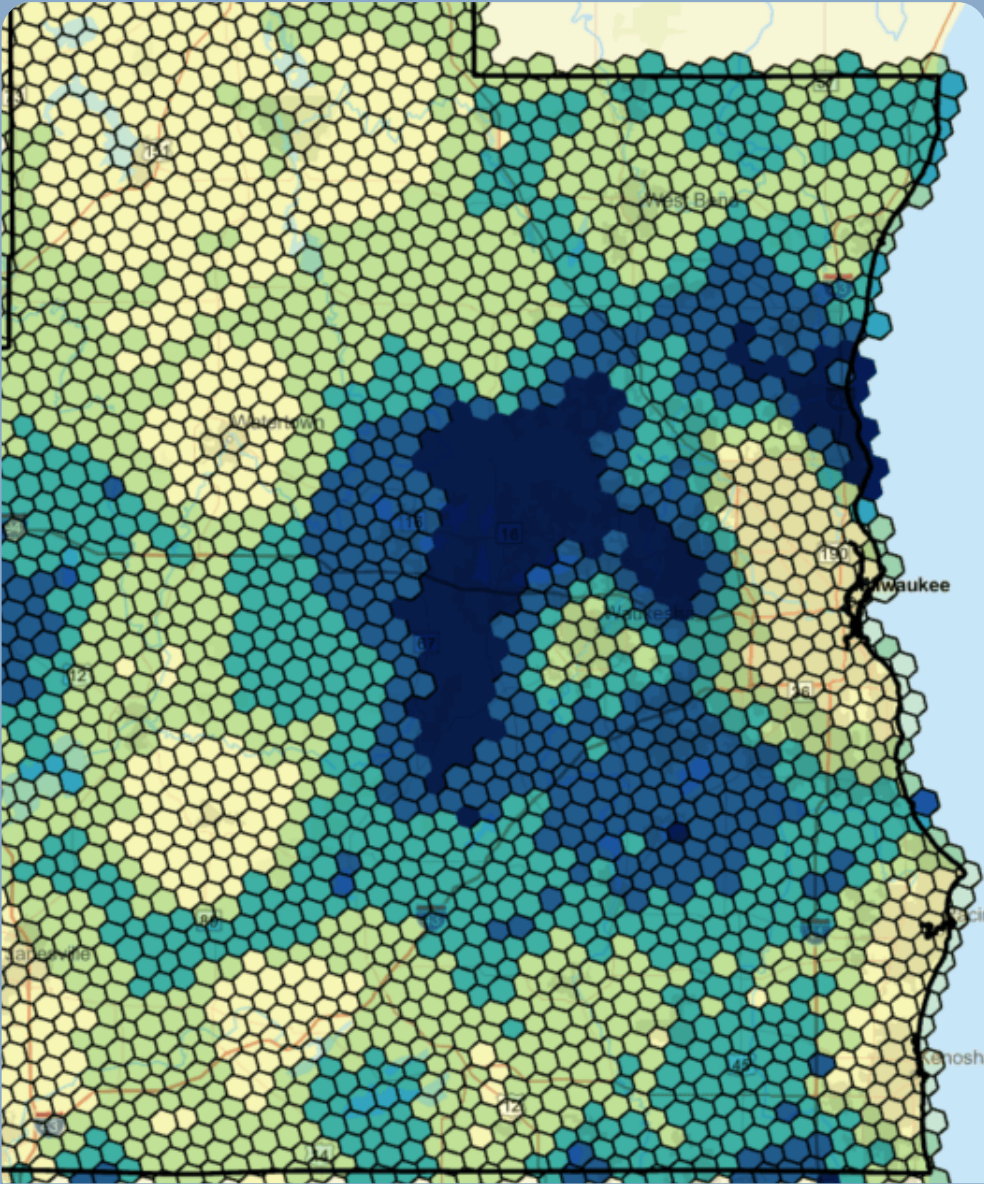
Adapting U.S. Census Bureau **Community Resilience Estimates** approach to low- and middle-income countries.



Case Study: Madagascar



Source: U.S. Census Bureau.



Grids

Uniform area.

Consistent and unchanging.

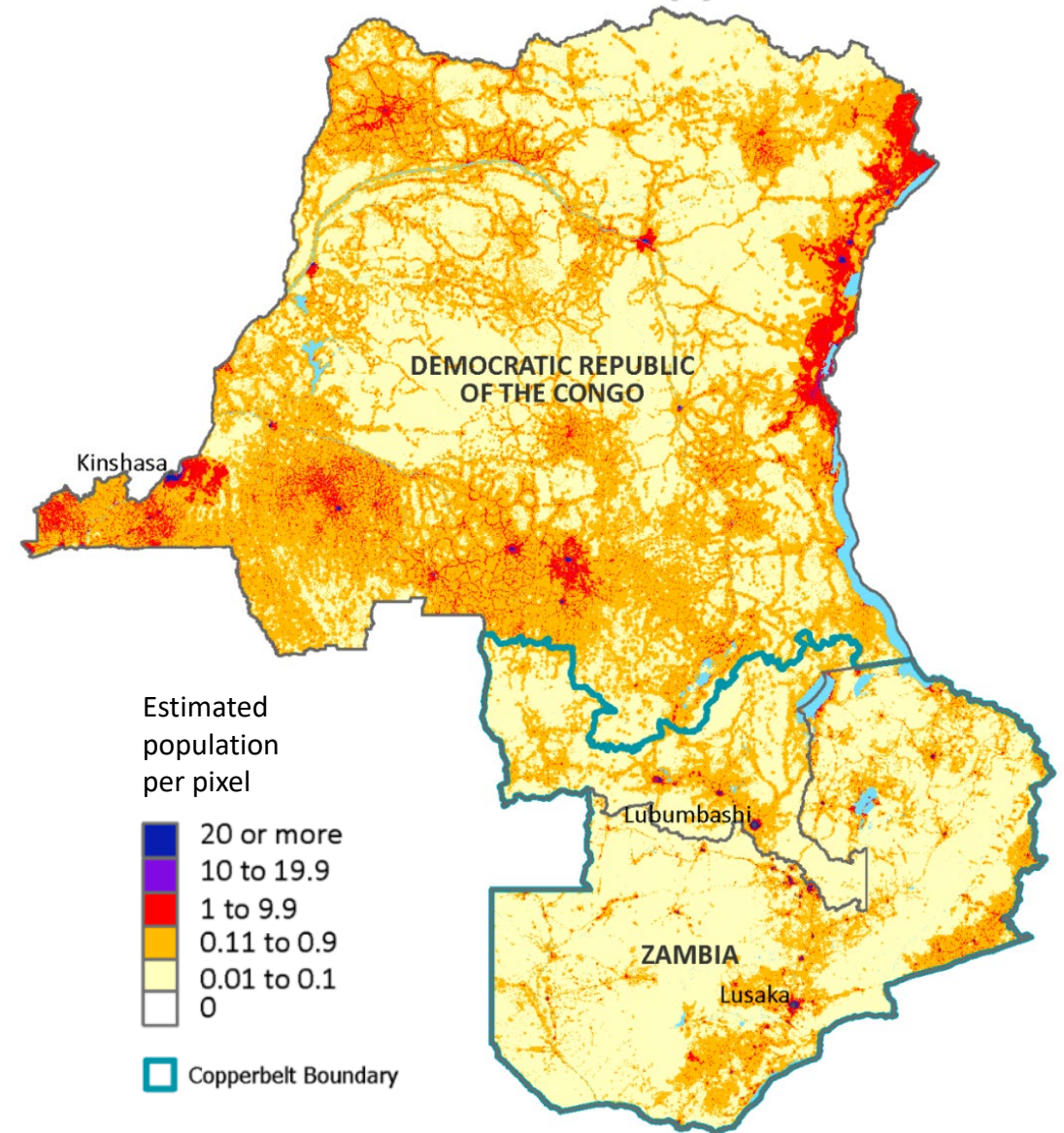
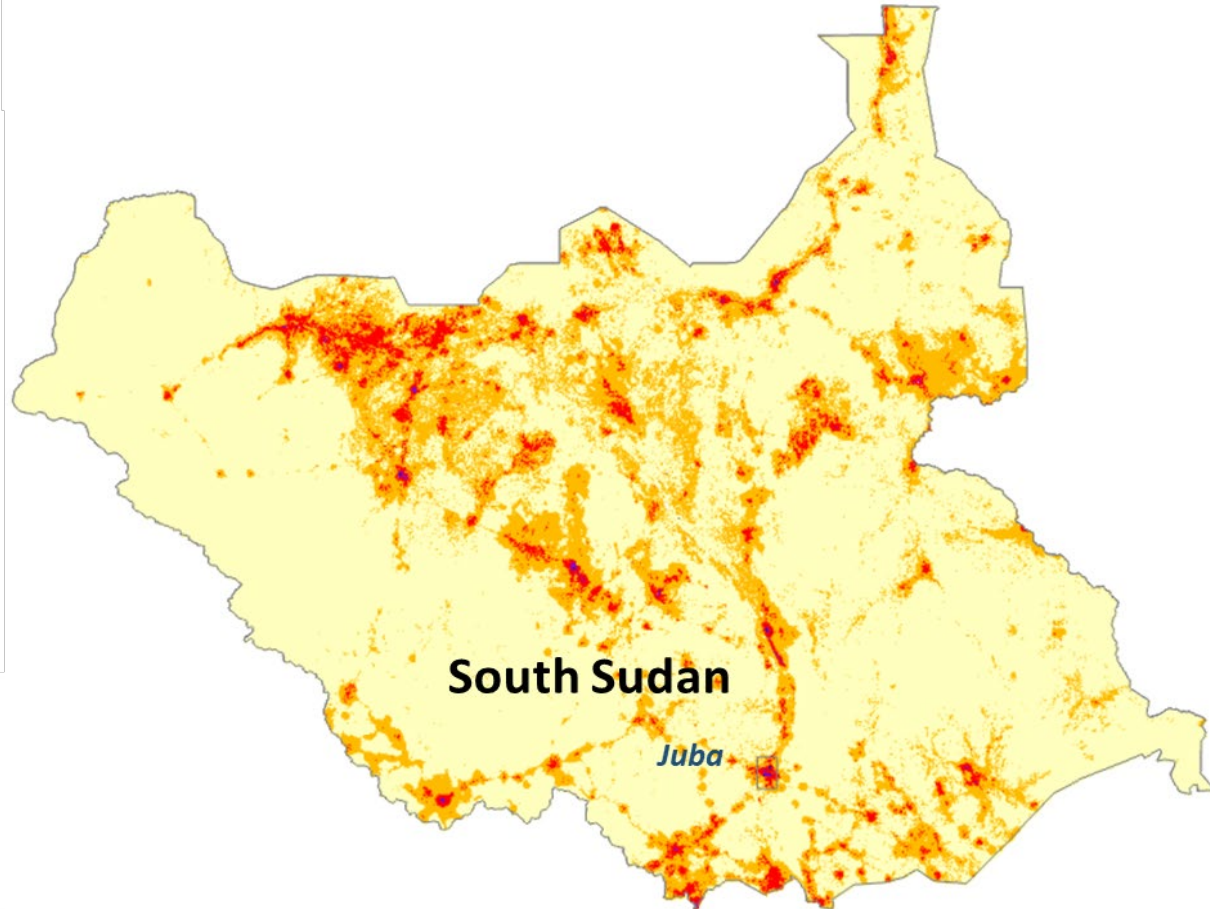
Data integration.

Small area analysis.

Consistent work units.

Alternative boundaries.

Gridded Population Estimates: Demobase





Thank you

✉ Robert.L.Santos@census.gov

United States®
Census
Bureau