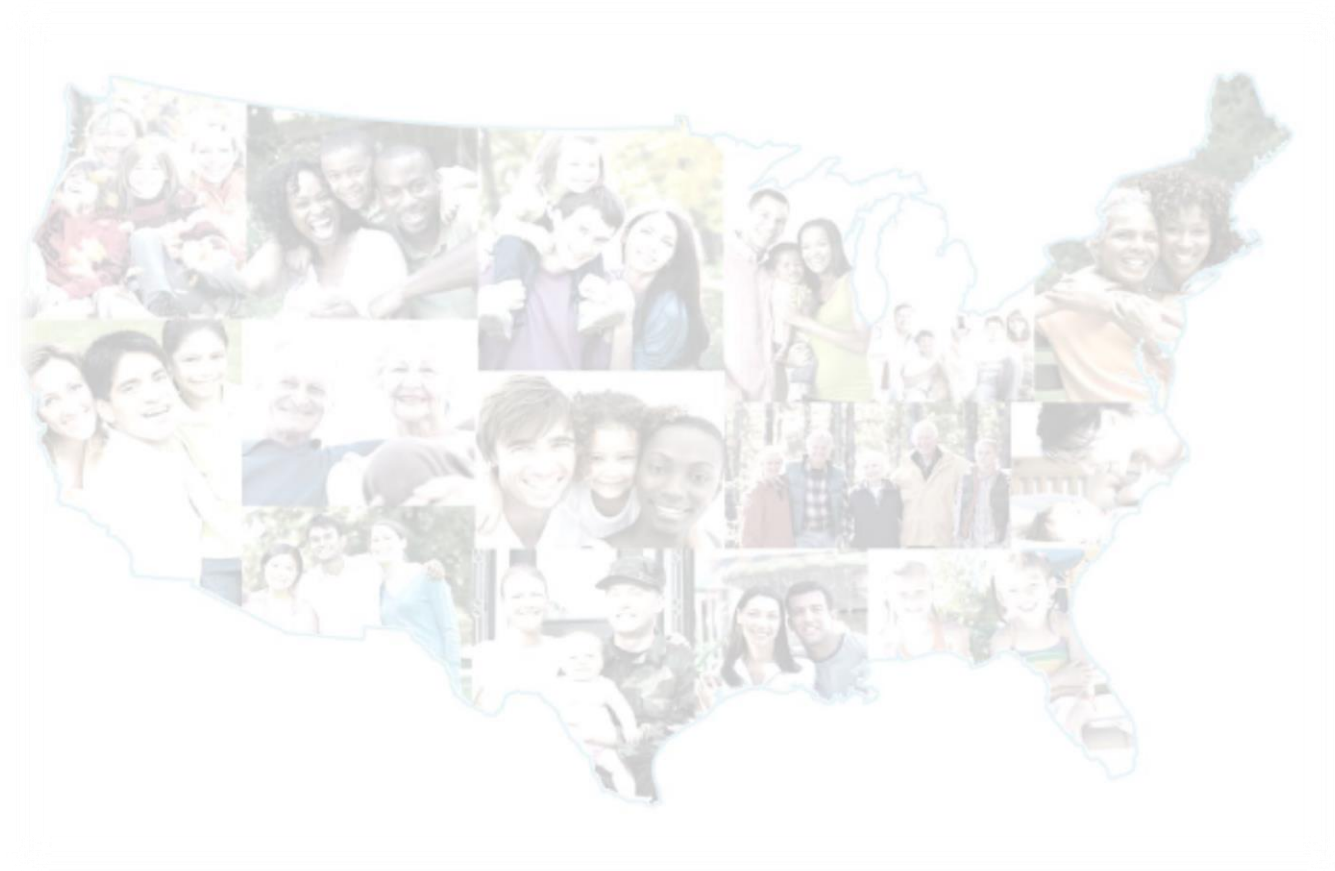


The Longitudinal Employer-Household Dynamics Program Data Products

2025 Goldschmidt Data Fellowship Workshop



Presenter:
Earlene K.P. Dowell
U.S. Census Bureau



LEHD
Program

Agenda

- I. LEHD Program and LED Partnership
- II. Data Products and Tools and more

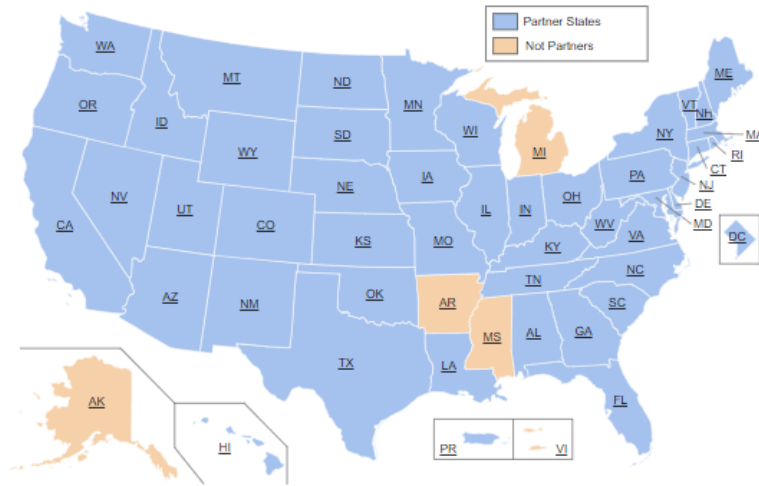
LEHD.CES.Census.Gov

- To review past webinars please visit the [Learn More](#) for more information.
- Find stories on how LEHD data is being used on our [LED in Action](#) tab.





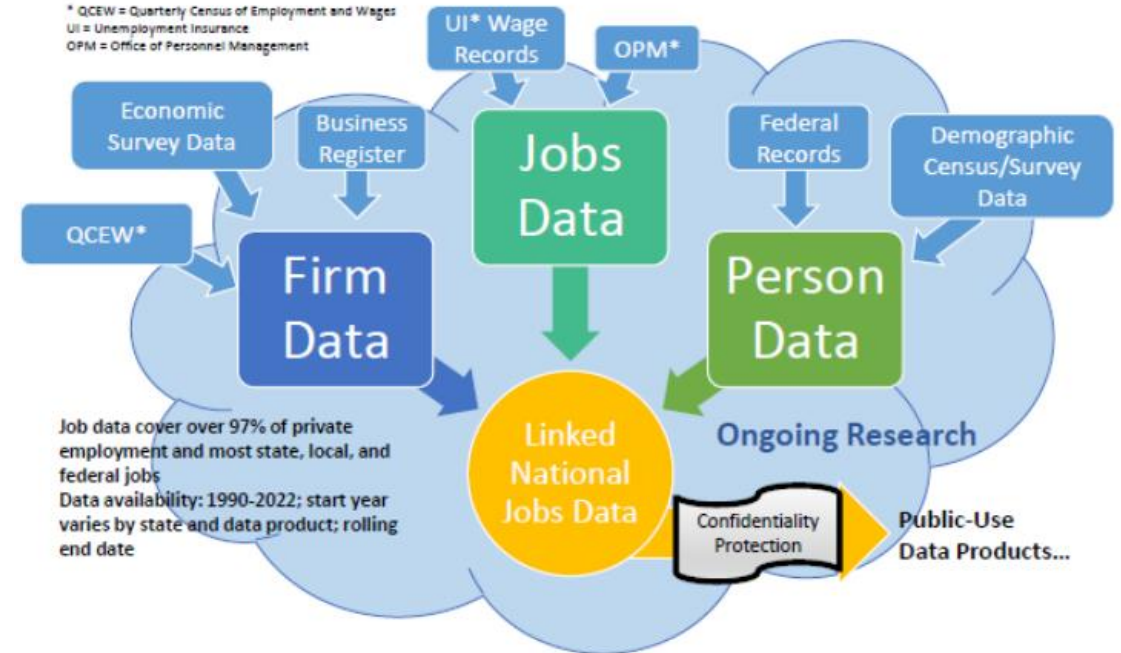
LEHD Program



Alabama	Illinois	Montana	Rhode Island
Alaska	Indiana	Nebraska	South Carolina
Arizona	Iowa	Nevada	South Dakota
Arkansas	Kansas	New Hampshire	Tennessee
California	Kentucky	New Jersey	Texas
Colorado	Louisiana	New Mexico	Utah
Connecticut	Maine	New York	Vermont
District of Columbia	Maryland	North Carolina	Virginia
Delaware	Massachusetts	North Dakota	Washington
Florida	Michigan	Ohio	West Virginia
Georgia	Minnesota	Oklahoma	Wisconsin
Hawaii	Mississippi	Oregon	Wyoming
Idaho	Missouri	Pennsylvania	Puerto Rico
			Virgin Islands

Partnership and Program

LEHD Data Infrastructure



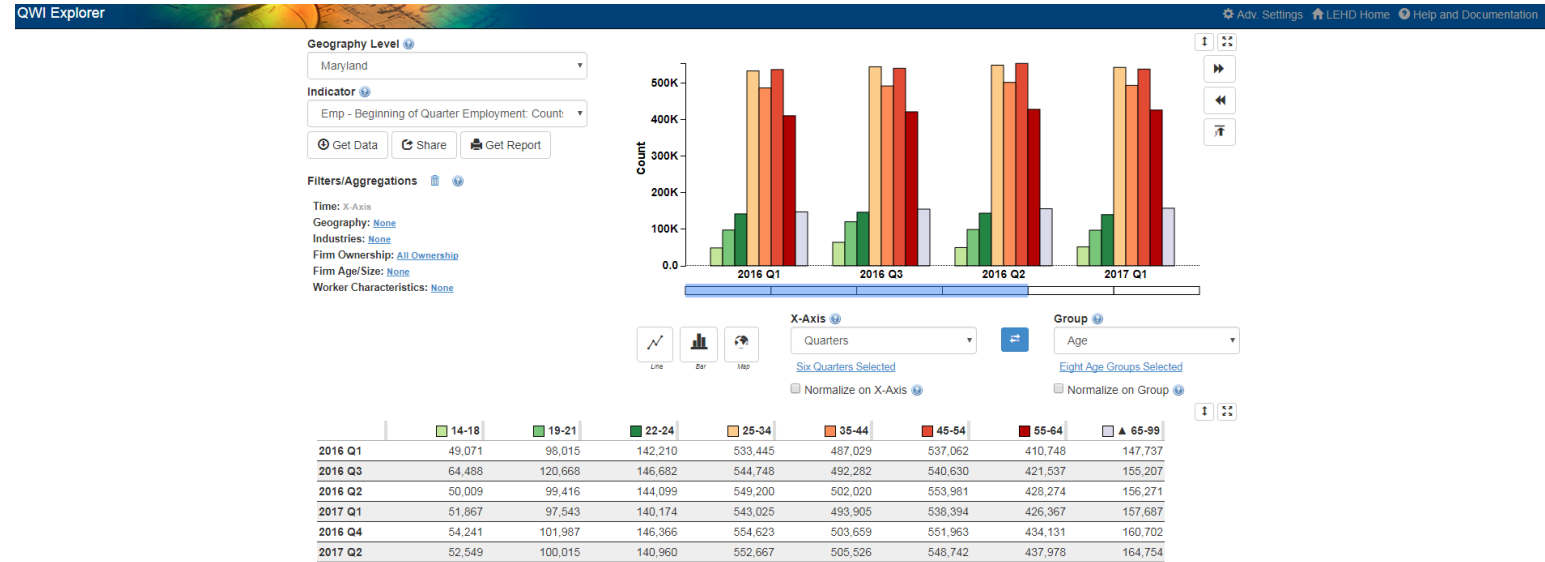


Longitudinal Employer-Household Dynamics (LEHD)

Data Product	Explore the data, answer questions, or get visualizations	Bulk data for use in analysis process/software	Live queries for building web applications
Quarterly Workforce Indicators (QWI)	QWI Explorer	LED Extraction Tool Raw data download	Census Bureau API
LEHD Origin-Destination Employment Statistics (LODES)	OnTheMap OnTheMap for Emergency Management	Raw data download LED Extraction Tool – Coming soon	Future development
Job-to-Job (J2J)	Job-to-Job Explorer	LED Extraction Tool Raw data download	Future Development
Post-Secondary Employment Outcomes (PSEO)	PSEO Explorer	Raw data download	Census Bureau API
Veteran Employment Outcomes (VEO)	VEO Explorer	Raw data download	Future Development



QWI Explorer



LEHD

Program ✓ 32 Quarterly Workforce Indicators

- ✓ Flexible Pivot Table and Map/Chart interface
- ✓ Data on detailed interactions between firms and workers include employment, employment change (individual and firm), and earnings
- ✓ Analyze/report by worker demographics: age, earnings, race, ethnicity, educational attainment, and sex

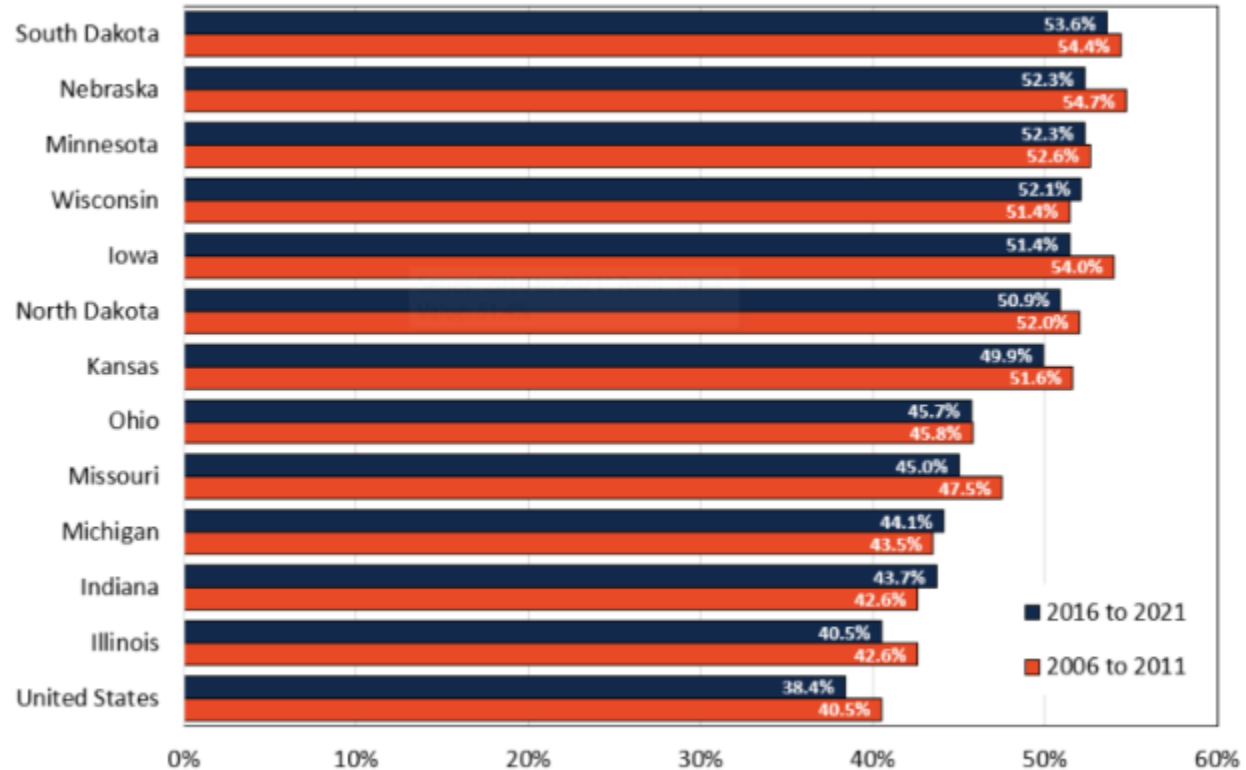
- ✓ Analyze/report by firm characteristics: NAICS classification (sector, 3, 4), firm age, and firm size
- ✓ Quarterly data very current (9-12 months old)
- ✓ National and 50 states available (plus DC)



LEHD
Program

Youth Employment Trends in the Midwestern United States

Figure 2. Labor Force Participation Rates Among Workers Age 16-19



Source: U.S. Census Bureau, American Community Survey, S2301 (2006-11; 2016-21)

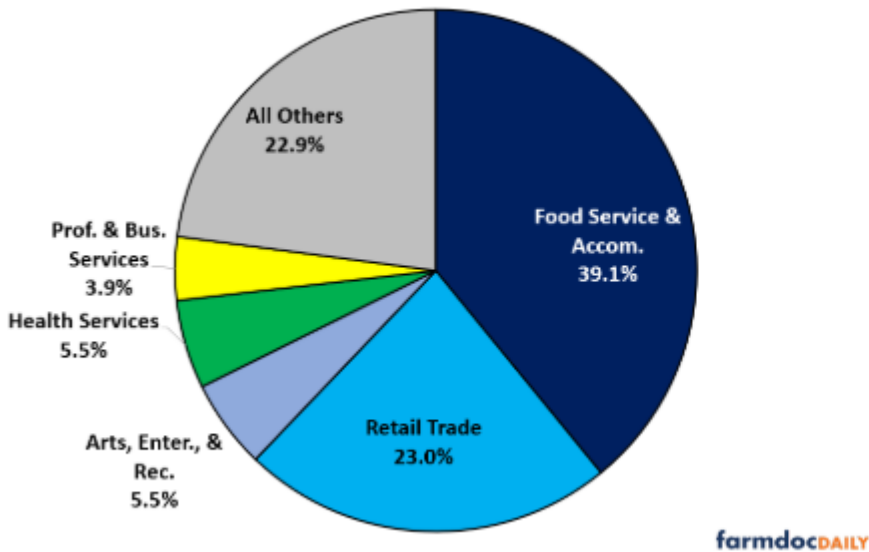
farmdocDAILY



LEHD
Program

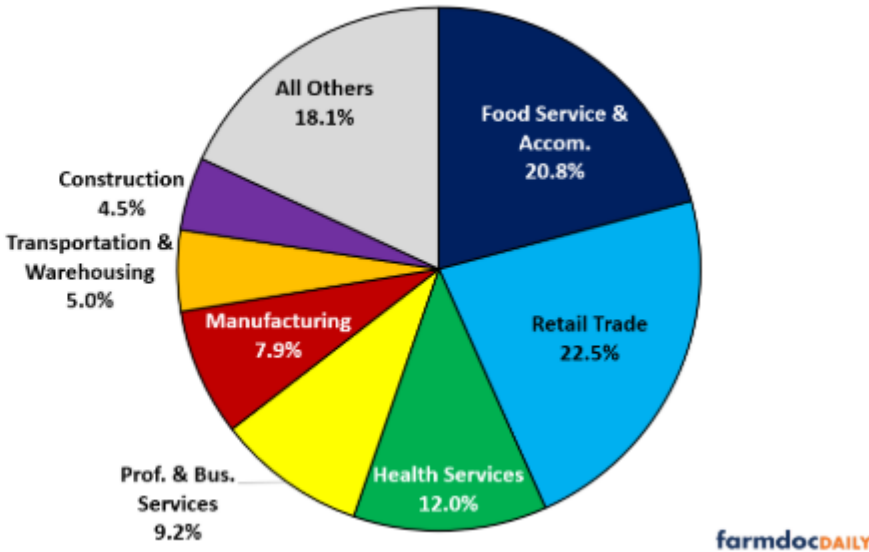
Employment by Sector in the Midwest

Figure 3A. Youth (Age 14-18) Employment by Sector in the Midwest



Source: US Census Bureau, Quarterly Workforce Indicators. Average of 4 quarters (Q2 2022 to Q4)

Figure 3B. Youth (Age 19-21) Employment by Sector in the Midwest



Source: US Census Bureau, Quarterly Workforce Indicators. Average of 4 quarters (Q1 2022 to Q4)



LEHD
Program

LED Extraction Tool

United States
Census
Bureau

LED Extraction Tool > Quarterly Workforce Indicators (QWI)

LEHD Home Help and Documentation

1. Geography2. Firm Characteristics3. Worker Characteristics4. Indicators5. Quarters6. Summary and Export

Estimated Results Size ⓘ

Number of Rows: 2,000
Size of CSV: Less than a Megabyte.
Size of ZIP: Less than a Megabyte.
Run Time: Less than a Minute.

Submit RequestCancel Request ⓘ

☒ Include Labels
Including labels will dramatically increase processing time and file size.
☐ Email results:

Request Progress ⓘ

Click "Submit Request" to send your request to the server.

SubmissionWaitingProcessingFinished

Additional Information

Basic QWI Information
[QWI Data Schema](#)
[QWI 101](#)
Comprehensive QWI Information
[Detailed QWI Definitions](#) ⓘ
[The LEHD Infrastructure Files and the Creation of the Quarterly Workforce Indicators document](#) ⓘ
Data Notices/Updates
[QWI Data Vintage Notices](#) ⓘ
[National QWI Data \(Beta\)](#)
For more information, go to [LED Extraction Tool Help and Documentation](#).

Current Request ID:

Query Results ⓘ

Current

Previous

Selections ⓘ

▼ Geography [Reset](#)

▼ States 12 selected

Illinois 17
Indiana 18
Iowa 19
Kansas 20
Michigan 26
Minnesota 27
Missouri 29
Nebraska 31
North Dakota 38
Ohio 39
South Dakota 48
Wisconsin 55

▼ Firm Characteristics [Reset](#)

▼ NAICS Sectors 21 selected

All NAICS 00
Agriculture, Forestry, Fishing and Hunting 11
Mining, Quarrying, and Oil and Gas Extraction 21
Utilities 22
Construction 23
Manufacturing 31-33
Wholesale Trade 42
Retail Trade 44-48
Transportation and Warehousing 48-49
Information 51
Finance and Insurance 52
Real Estate and Rental and Leasing 53
Professional, Scientific, and Technical Services 54
Management of Companies and Enterprises 55
Administrative and Support and Waste Management and Remediation Services 56
Educational Services 61
Health Care and Social Assistance 62
Arts, Entertainment, and Recreation 71
Accommodation and Food Services 72
Other Services (except Public Administration) 81
Public Administration 92

▼ Firm Ownership

All Private Ownership A05

▼ Worker Characteristics [Reset](#)

▼ Sex and Age 1×2 selected

All Sexes 0
14-18 A01
19-21 A02

▼ Indicators [Reset](#)

▼ Employment 1 selected

Emp

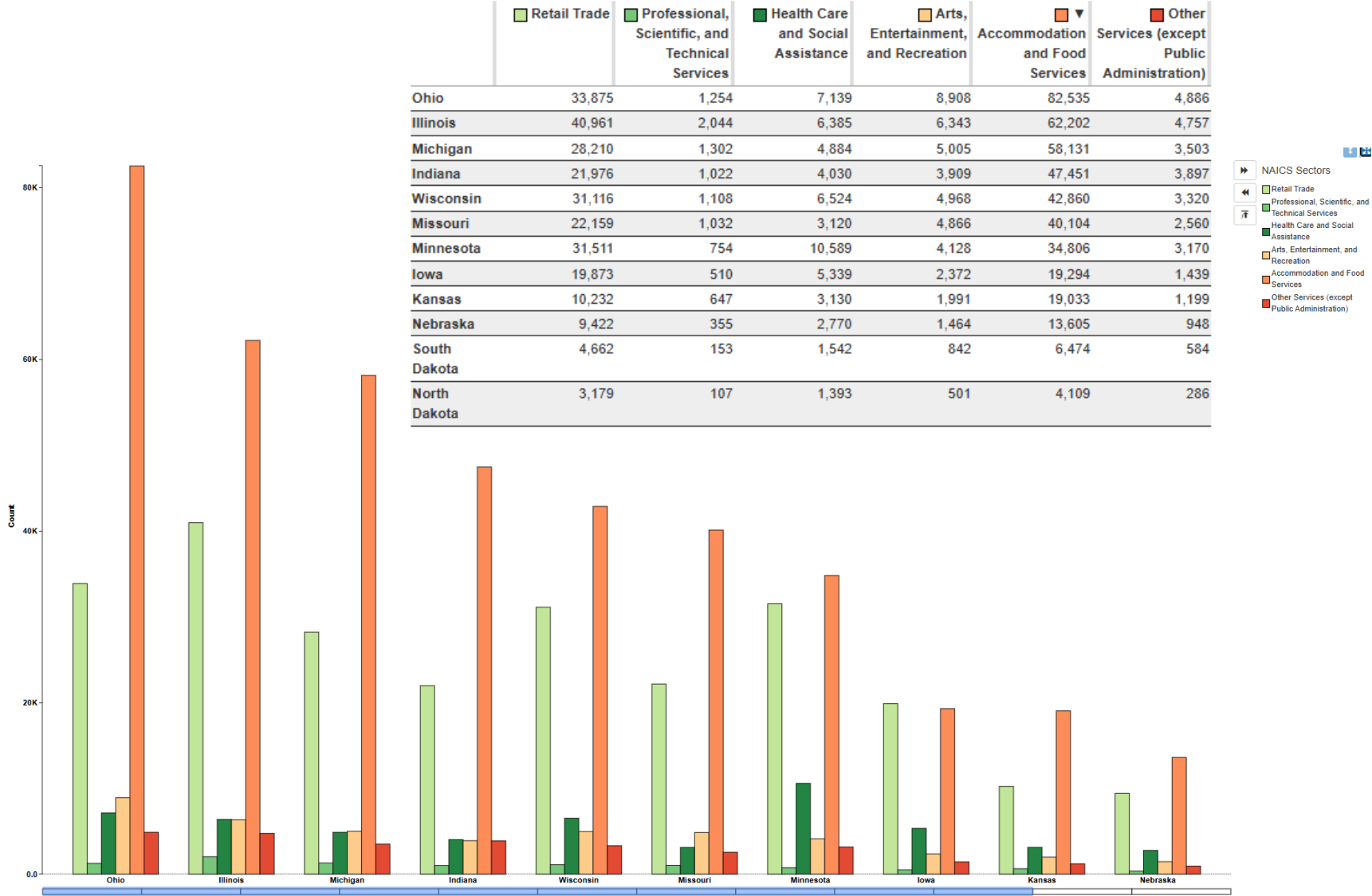
▼ Quarters 4 selected [Reset](#)

Return to QuartersLoad SettingsSave Settings ⓘ



LEHD
Program

QWI Explorer





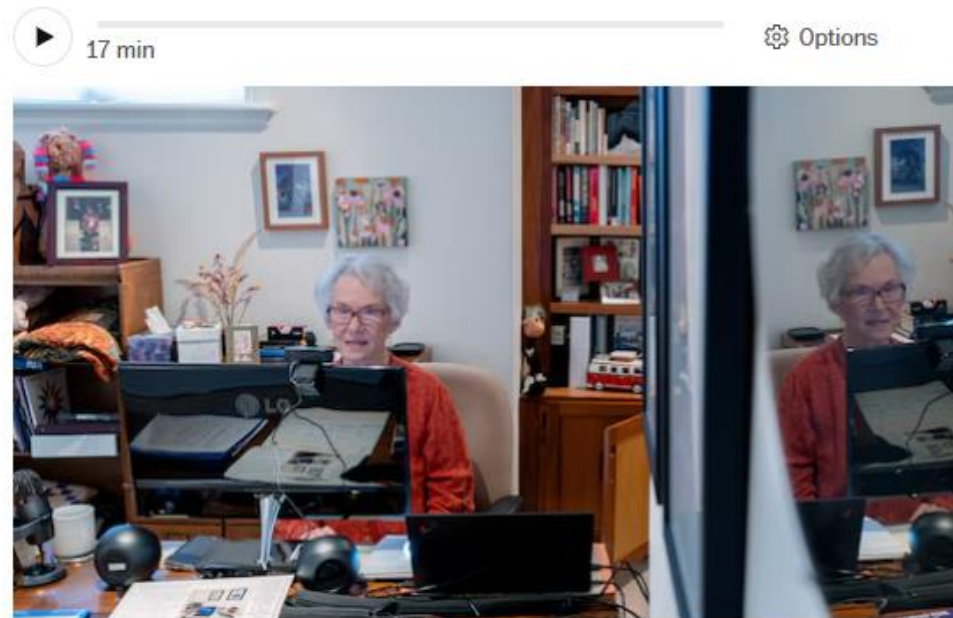
LEHD
Program

Older Female Workers

The future of work is female – and older

More women than ever are putting off retirement. Is that a good thing?

Thursday, January 23, 2025



Lexy Martin works in her home office in Auburn, California. (Andri Tambunan for The Washington Post)

<https://www.washingtonpost.com/podcasts/post-reports/the-future-of-work-is-female--and-older/>

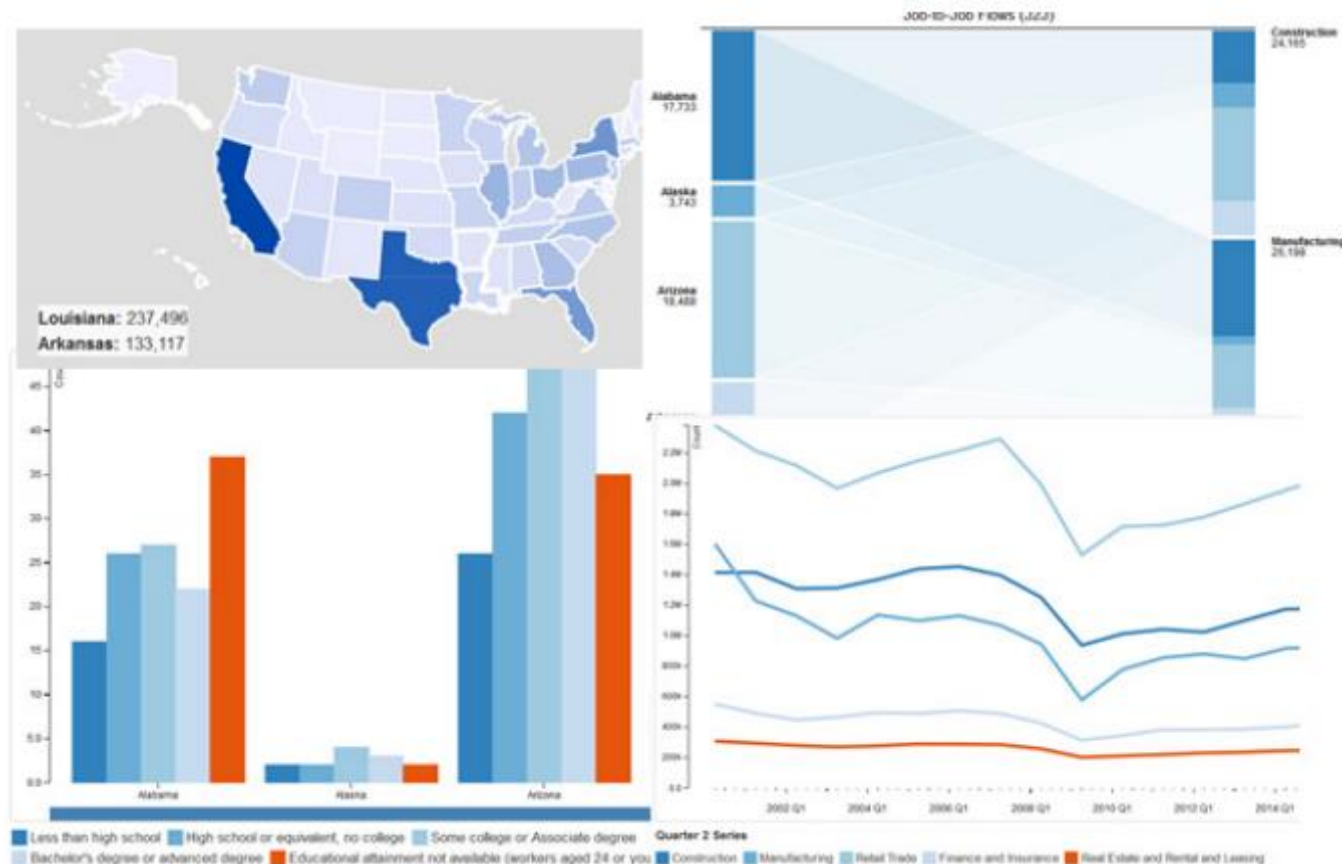


Job-to-Job Explorer

LEHD Program

Job-to-Job Flows Explorer Highlights

- **Comprehensive Data Coverage**—Access more than 60 measures of worker reallocation, data going back to 2000 for some states, firm and worker characteristics, and tabulations at the state and metro area-levels.
- **Flexible Dashboard Interface**—Explore worker earnings and flows between industries and geographies by building the exact table, map, line chart, or other chart required to analyze—and inspire subsequent—worker flows questions.
- **Interactive Visualizations and Table Exports**—The six different visualization options provide multiple perspectives on worker flows between jobs or into/out of nonemployment. Data tables can be downloaded as Excel or CSV files.
- **Easy-To-Use Documentation**—[Online documentation](#), including FAQs and walkthroughs, is available through the LEHD Web site at <lehd.ces.census.gov>.

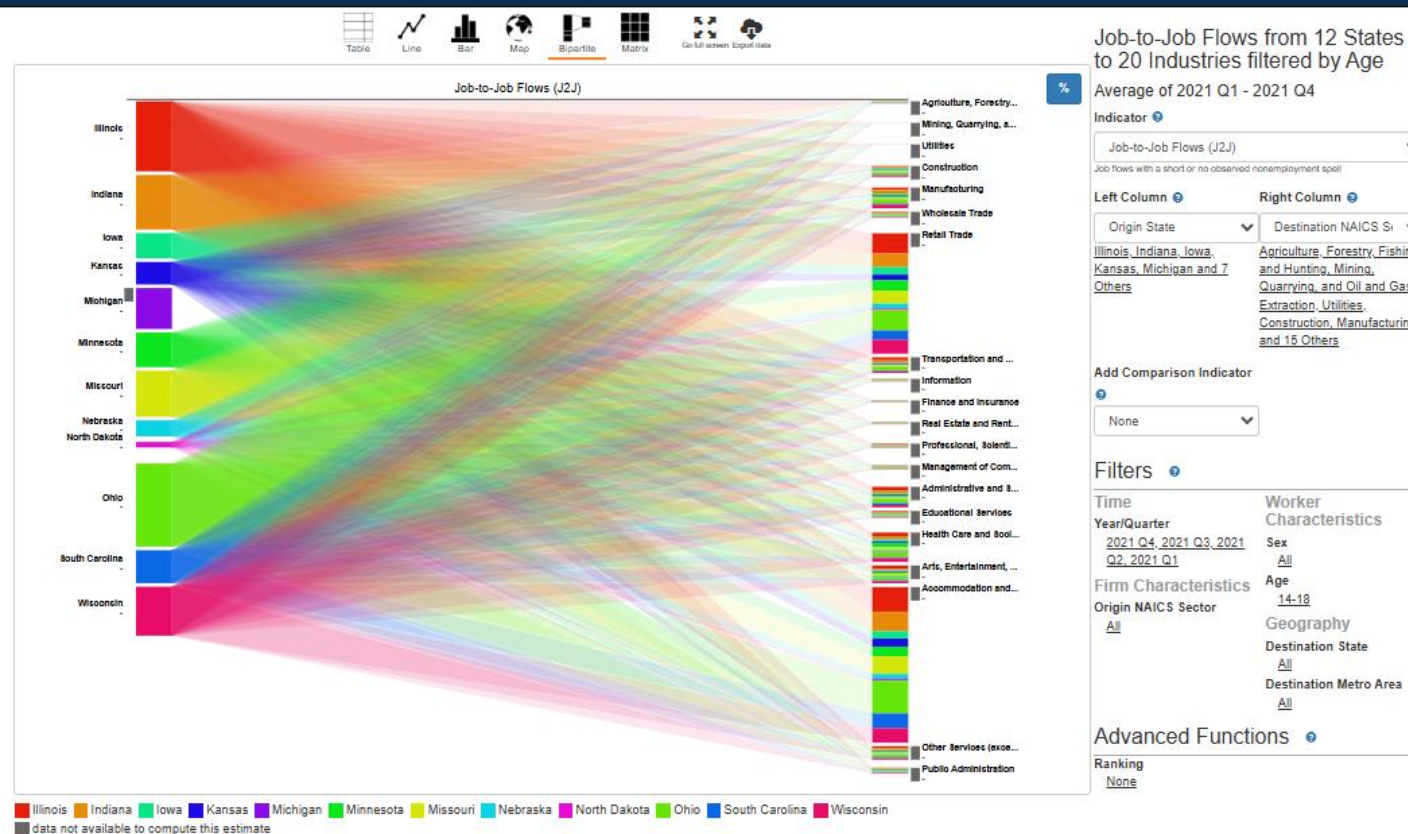




J2J Flows from 12 States to 20 Industries by Age

LEHD
Program

United States
Census Bureau
J2J Explorer





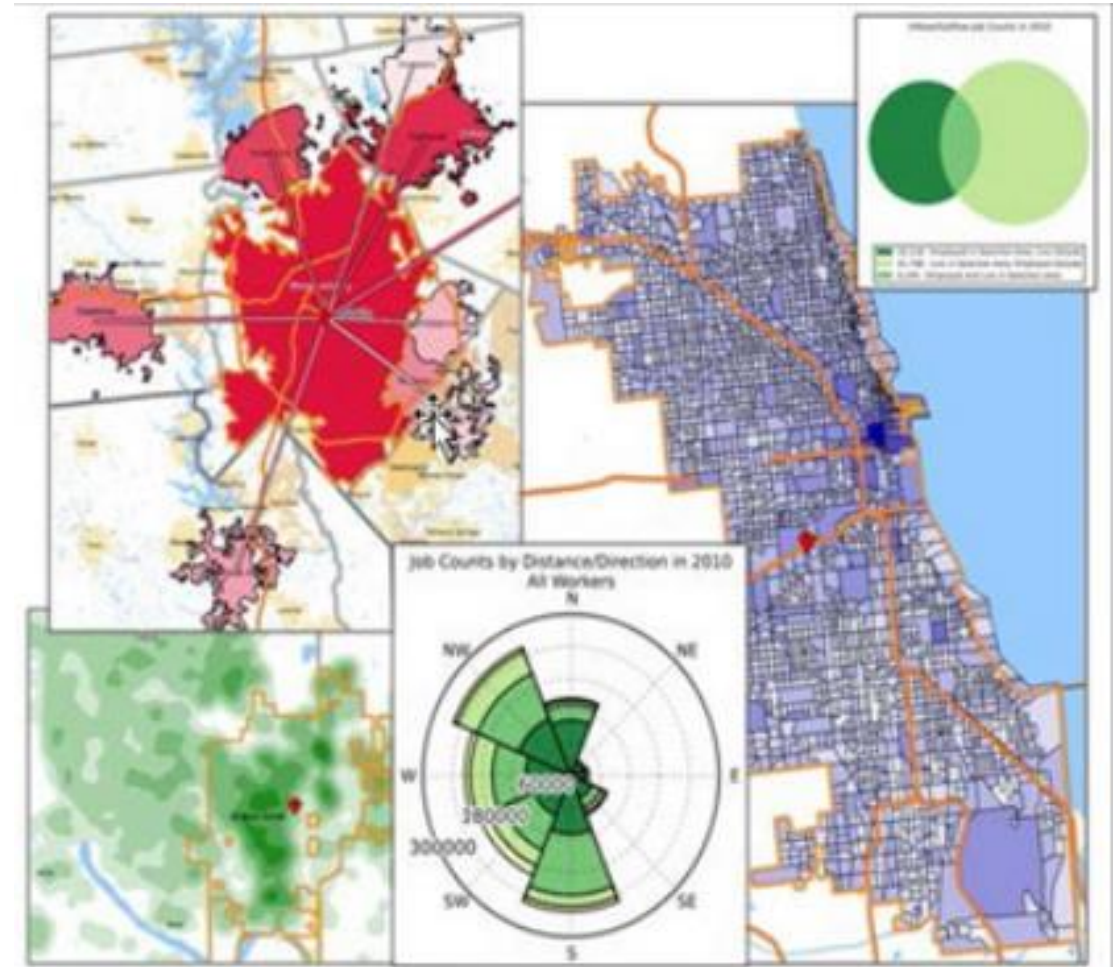
LEHD Program

OnTheMap

OnTheMap Highlights

- **Comprehensive Coverage** – Census block-level coverage for home and work areas in 50 partner states/territories with consecutive years of data starting in 2002. Available characteristics include worker age, earnings, industry sector, worker race, worker ethnicity, worker educational attainment, worker sex, firm age, and firm size.
- **Powerful Analysis Tools** – Six different analysis types are available for users to analyze, compare, and summarize a vast amount of labor force data for user-defined or census-standard areas. Each set of results are presented through interactive maps, charts, and reports.
- **Versatile Outputs** – Results can be exported to a report (PDF, HTML, XLS), to a map (KML or Shapefile), or to other forms (PNG images or composite PDF). Users can also save their analysis settings for future use in OnTheMap.
- **Easy-To-Use Documentation** – Online documentation, including tutorials and walkthroughs, is available at lehd.ces.census.gov/applications/help/onthemap.html.

Contact: <CES.OnTheMap.Feedback@census.gov>





LEHD
Program

Run MARC commuter trains into Virginia. It could draw thousands more riders

TRANSIT OPINION By [Ethan Finlan](#) (Guest Contributor) April 9, 2024



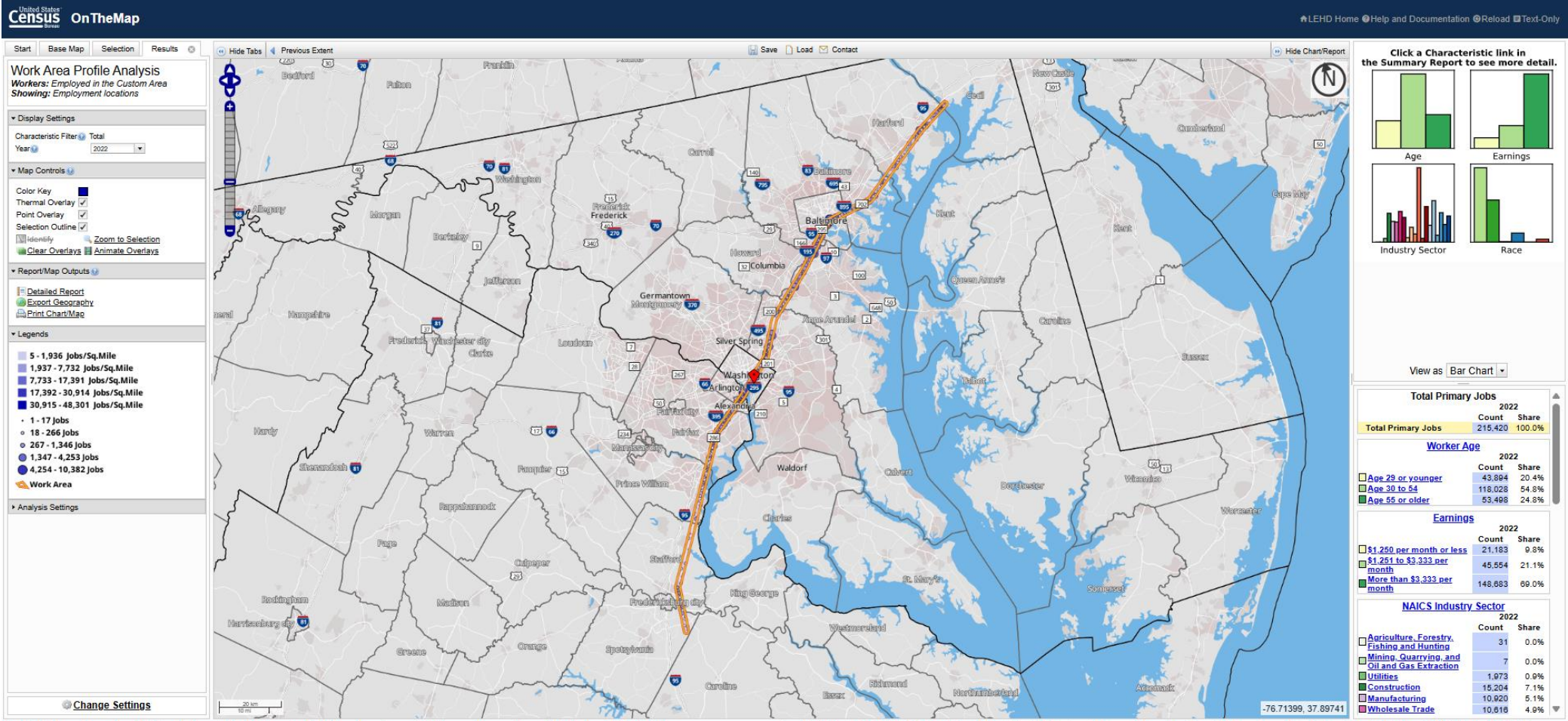
[MARC my words](#) by Adam Fagen licensed under [Creative Commons](#).

The Washington region has two commuter rail systems funneling riders from Maryland and Virginia into the District. But currently, those systems — MARC in Maryland and VRE in Virginia — both terminate at Union Station, and don't continue into the other state.



Advanced Selection Tab

LEHD
Program



OnTheMap for Emergency Management

LEHD
Program



Hurricanes, Floods,
Winter Storms



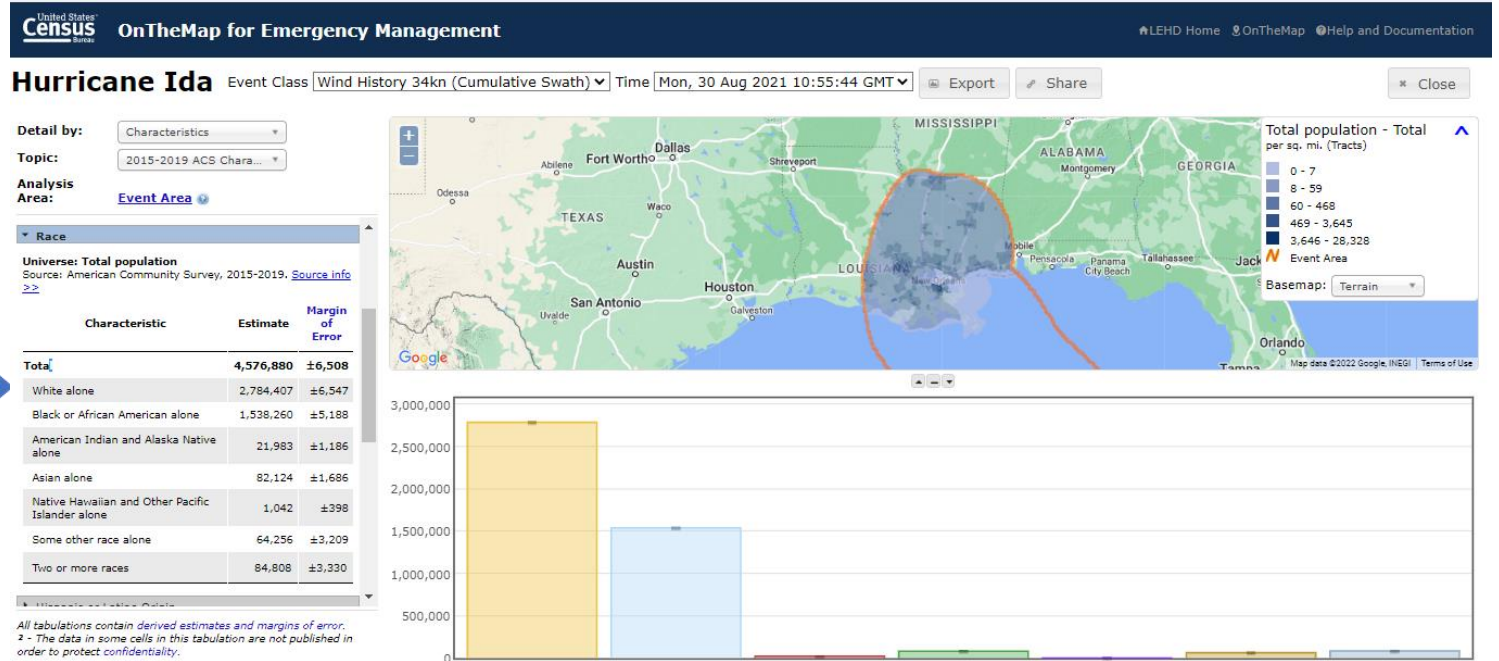
Disaster Areas



Wildfires



Demographic &
Economic Data



New Public Data Service for Emergency Preparedness & Response

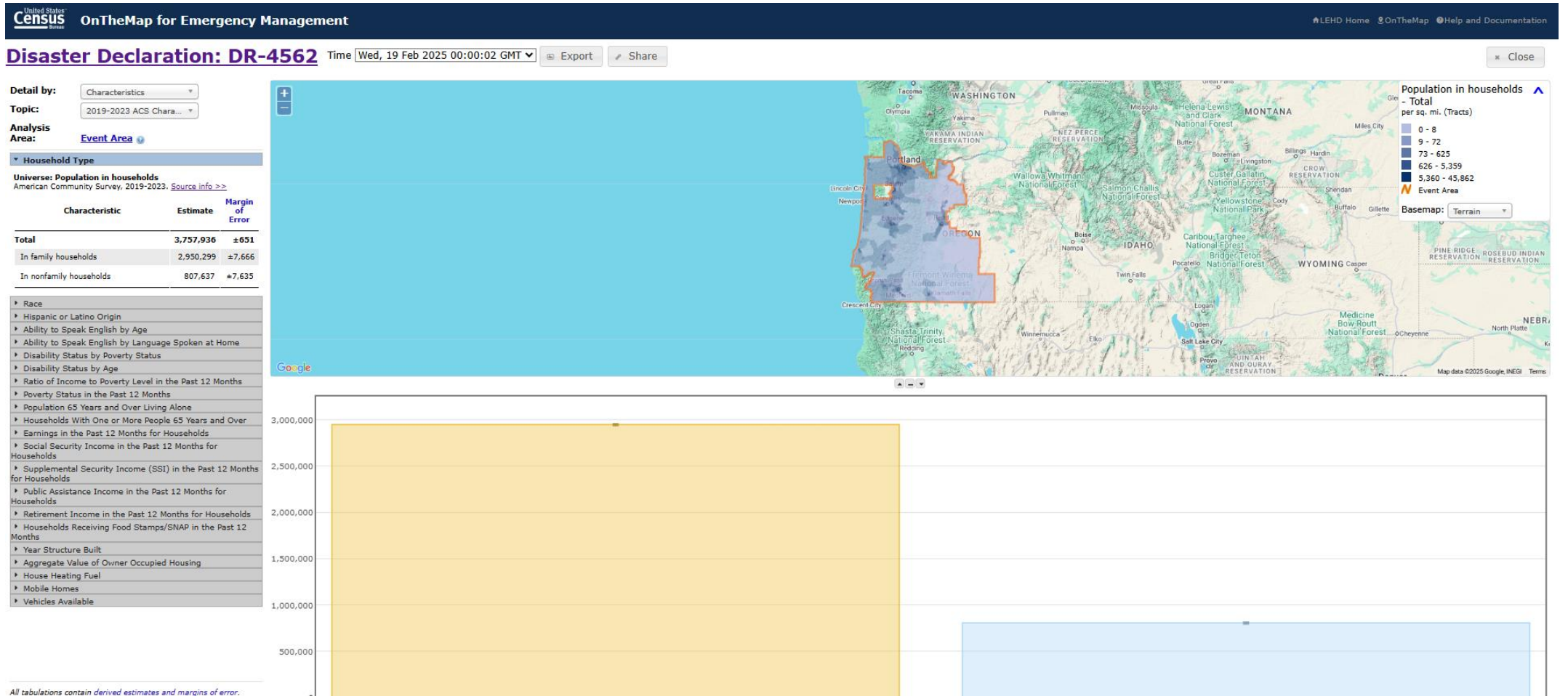
- Comprehensive Reports
- Real-time Data Updates
- Easy-to-use & Interoperable
- Historical Event Archive
- Flexible Analyses & Visualizations





LEHD Program

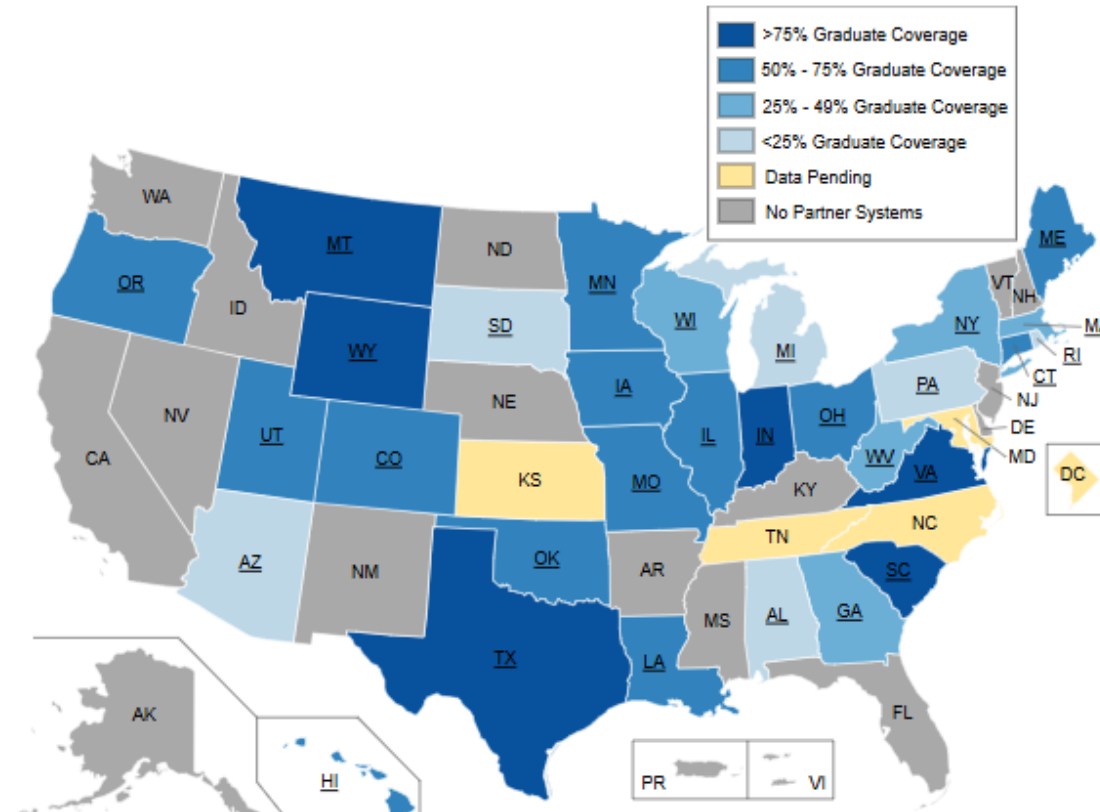
Disaster Declaration: DR - 4562





Post Secondary Employment Outcomes (PSEO) Explorer

PSEO Coverage Map



LEHD
Program



Health care on the home front: UW grads remain in the state to keep Wisconsin well



Post-Secondary Employment Outcomes Explorer

[What is PSEO?](#) [Download Data](#) [Email Us](#) [Tutorial](#) [Help](#)

Data Type
☒ Earnings ☐ Flows

State
Wisconsin

Institution
University of Wisconsin - Madison

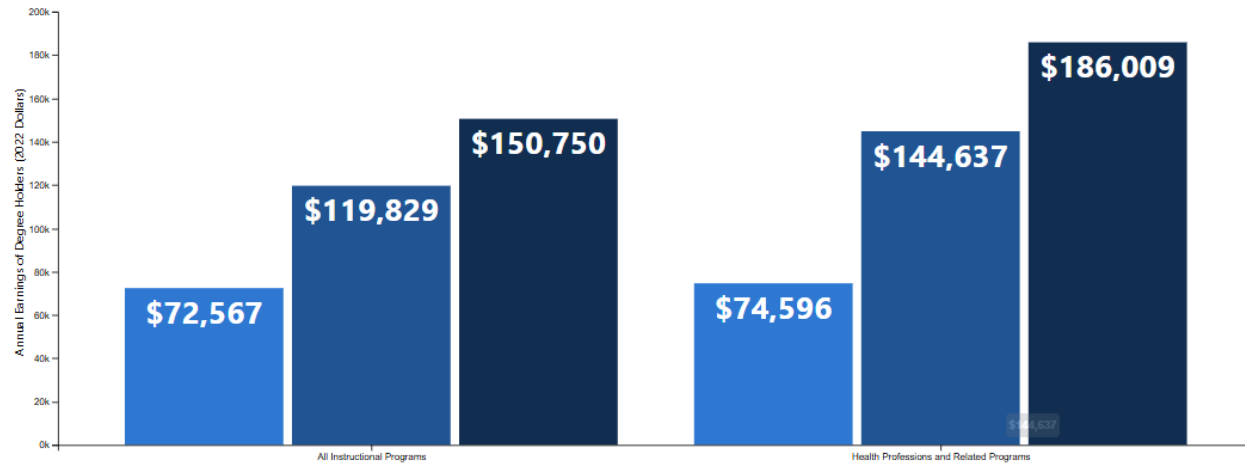
Degree Level
Doctoral - Professional Practice

Graduation Cohort
All Cohorts

Compare Earnings by
☒ Time ☐ Percent

Earnings-percentile Filter
25 50 75

Legend
1 Years Postgrad
5 Years Postgrad
10 Years Postgrad



Program Specificity
☒ General ☐ Detailed

Sort Program List by
Size Name

Filter Degrees...

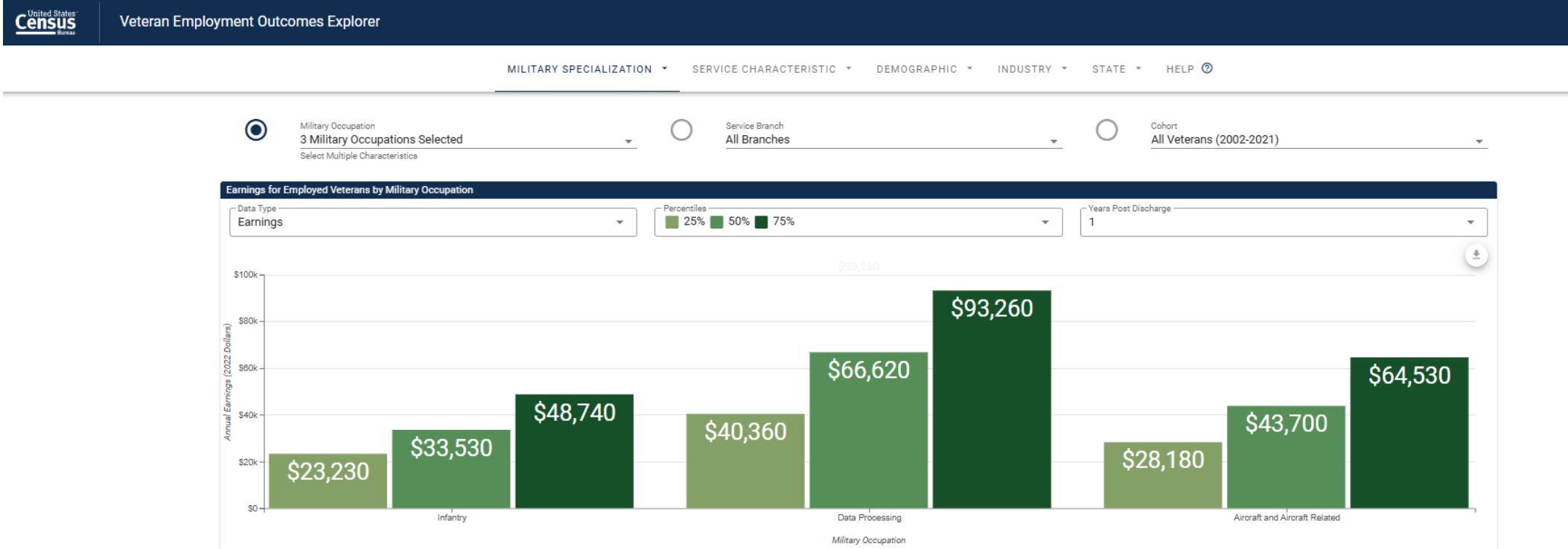
All Instructional Programs Health Professions and Related Programs Legal Professions and Studies Agricultural/Animal/Plant/Veterinary Science...

Some cells are not available due to suppression.



Veteran Employment Outcomes Explorer

LEHD
Program



<https://lehd.ces.census.gov/applications/veo/occupation/detail/>



LEHD
Program

Summary and Resources

Help and Documentation

Quarterly Workforce Indicator

https://lehd.ces.census.gov/applications/help/qwi_explorer.html#!what_is_qwi_explorer

Job-to-Job Flows

https://lehd.ces.census.gov/applications/help/j2j_explorer.html#!what_is_j2j_explorer

OnTheMap

https://lehd.ces.census.gov/applications/help/onthemap.html#!getting_started

OnTheMap for Emergency Management

https://lehd.ces.census.gov/applications/help/onthemap_em.html#!getting_started

Post Secondary Employment Outcomes

https://lehd.ces.census.gov/data/pseo_experimental.html#methodology

Veteran Employment Outcomes

https://lehd.ces.census.gov/data/veo_experimental.html

Q & A and Thank You!

Contact Information:

Earlene K.P. Dowell
Earlene.KP.Dowell@Census.Gov

For detailed questions concerning the 2020 Decennial, contact:
301-763-INFO or 800-923-8282

To schedule additional training with a Census Data
Dissemination Specialist in your area, please call **844-ASK-DATA**
Or email us at: **census.askdata@census.gov**